

# Society for Neuroscience 2021

Patch Clamp

November, 2021



# Stronger. Together.



Pre-clinical solutions



Panlab



Cellular solutions



Molecular solutions



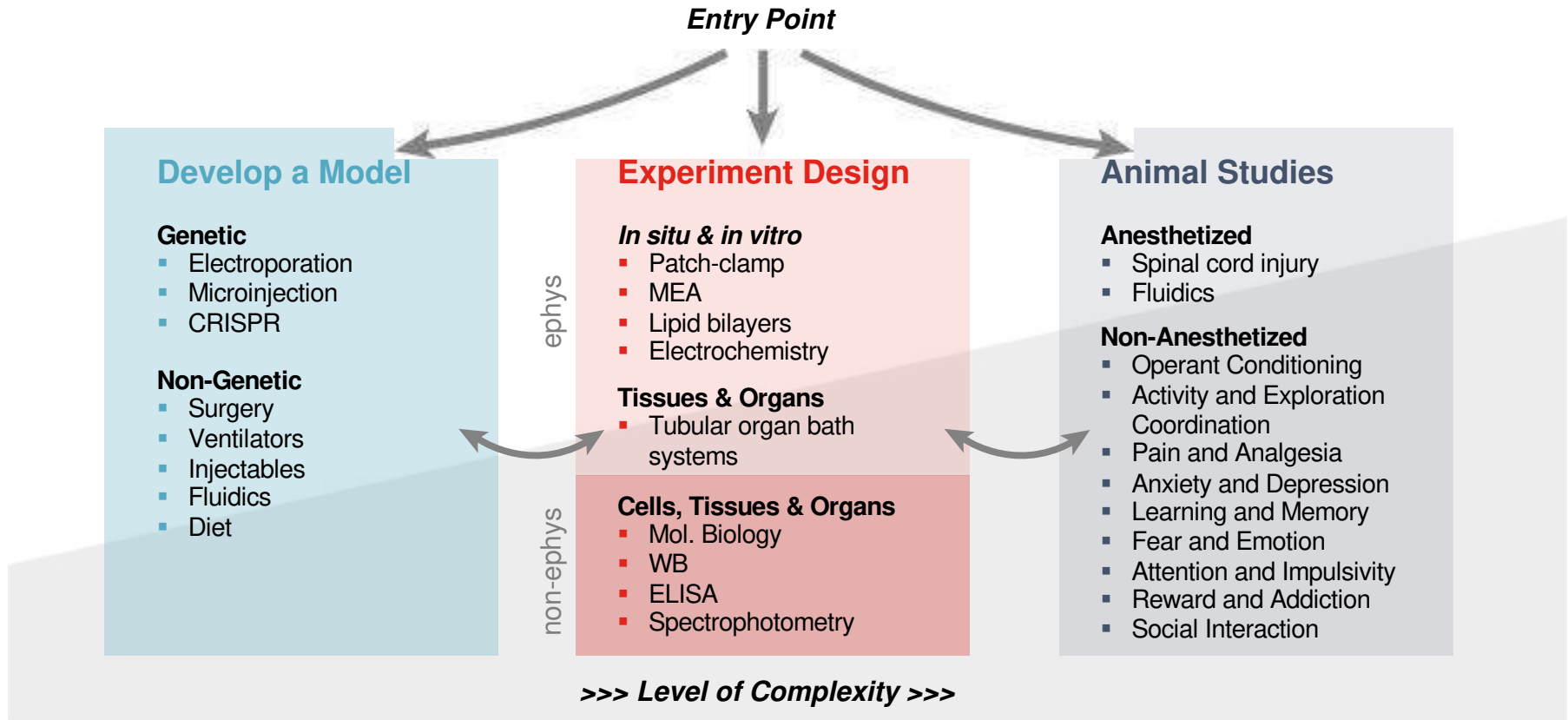
Support solutions



Powered by Harvard Bioscience, Inc.



# Neuroscience Research



- HA Ventilators & pumps • BTX Electroporators • Warner Microinjectors • HEKA Patch-clamp • MCS MEA Systems •
- HSE Isolated Organ • Hofer & SciePlas WB • Biochrom AAA • DSI Telemetry • Panlab & Coulbourn Behavior •

# Patch Clamp



Researchers typically require	How we support you
Reproducible measurements of single ion channel currents	Only leading amplifier with full digital control allowing repeatable, pre-programmed experiments for consistent results
Proper support of specimen for patch clamp, imaging	Precise and durable specimen support (temperature control, perfusion, microinjection)
TEVC experiments and integration with any microscope	Integrate into any combination of microscope and micromanipulators
Fast implementation: from equipment to experiment in less than 30 days	Complete patch clamp rigs designed by application experts



# Patch Clamp

Full rig components and integration



**Your complete solution for physiology research in ion channel voltage and currents**

- Patch clamp amplifier and DAQ
- Data acquisition software
- Inline solution heater with chamber
- Perfusion fast-step system
- Dedicated workstation vacuum system
- Stage adapters
- Covered glasses

# Patch Clamp

Powerful Amplifiers and DAQ – Manual or Automatic



## EPC 10 USB

- All in one amplifier and data acquisition
- Completely automatic with Patchmaster Next Software
- For a multitude of applications: cell culture (in-vitro), organotypic slices, acute brain slices (in-situ), whole animal (in-vivo)

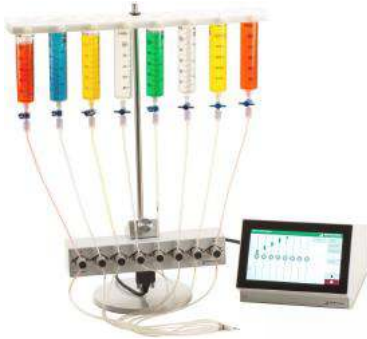


## EPC 800

- Telegraphing patch clamp amplifier
- Compatible with any 3rd party software and DAQ

# Patch Clamp

## Perfusion and Temperature Control



### Valve Control System

- Computer or manual control
- Multiple configurations for any application
- Reliable and easy to use.

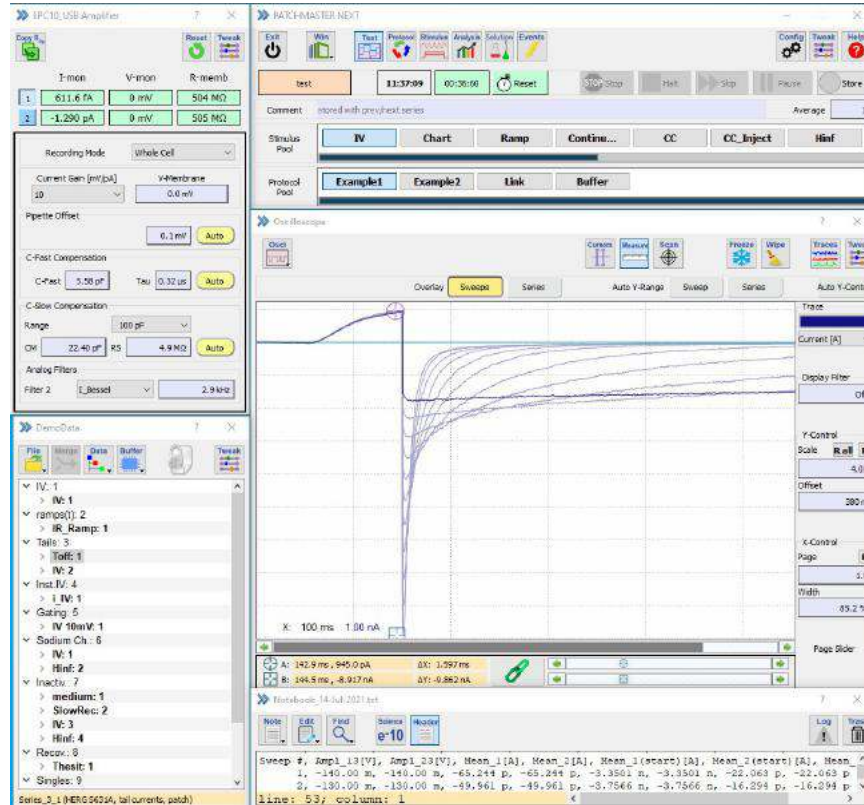


### Inline solution heater/cooler SC-20

- Heats and cools from 0° to 50°C
- Optimized for use with Warner CL-100 temperature controller
- Compatible with Warner chambers

# Patch Clamp

Patch Master Next – One software to do it all



## 3-in-1: Amplifier, DAQ, Analysis

- Intuitive GUI for faster navigation
- Quick Access Buttons
- Multi Window Buttons
- Drag and drop for ease of use
- User-defined settings to perfectly fit your experiment.



# Why Harvard Bioscience?



Do you experience these challenges?	How Harvard Bioscience supports you
Inefficiencies due to multiple vendor transactions	Harvard Bioscience delivers a full suite of solutions to tackle your needs and minimize your headaches
Disconnect between adjacent labs	With scientists on staff, we are uniquely positioned to understand the requirements of all your labs, and construct a proposal that ensures the solutions for one lab appropriately feed the results of the others
“We don’t know what we don’t know.”	Experienced representatives can conduct an assessment to help you determine the solutions that are right for you
Inefficiencies with grant proposal applications	A trusted and reputable partner, Harvard Bioscience can provide expertise to support your grant proposal submissions



# Patch Clamp



For more information on our patch clamp products:

[www.heka.com](http://www.heka.com)

[www.warnerinstruments.com](http://www.warnerinstruments.com)

