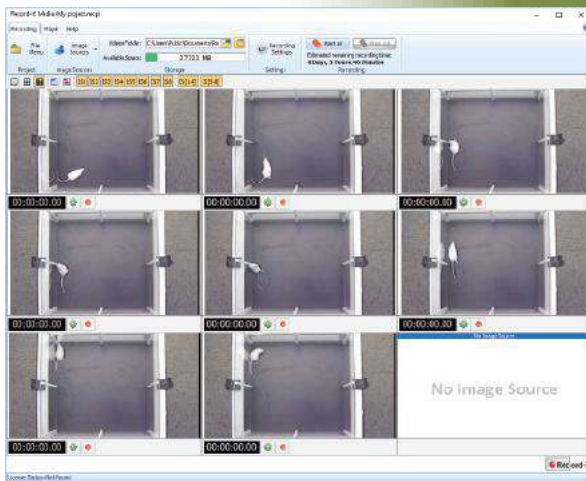


RECORD-IT! MEDIA

Multi-camera video recorder & media player

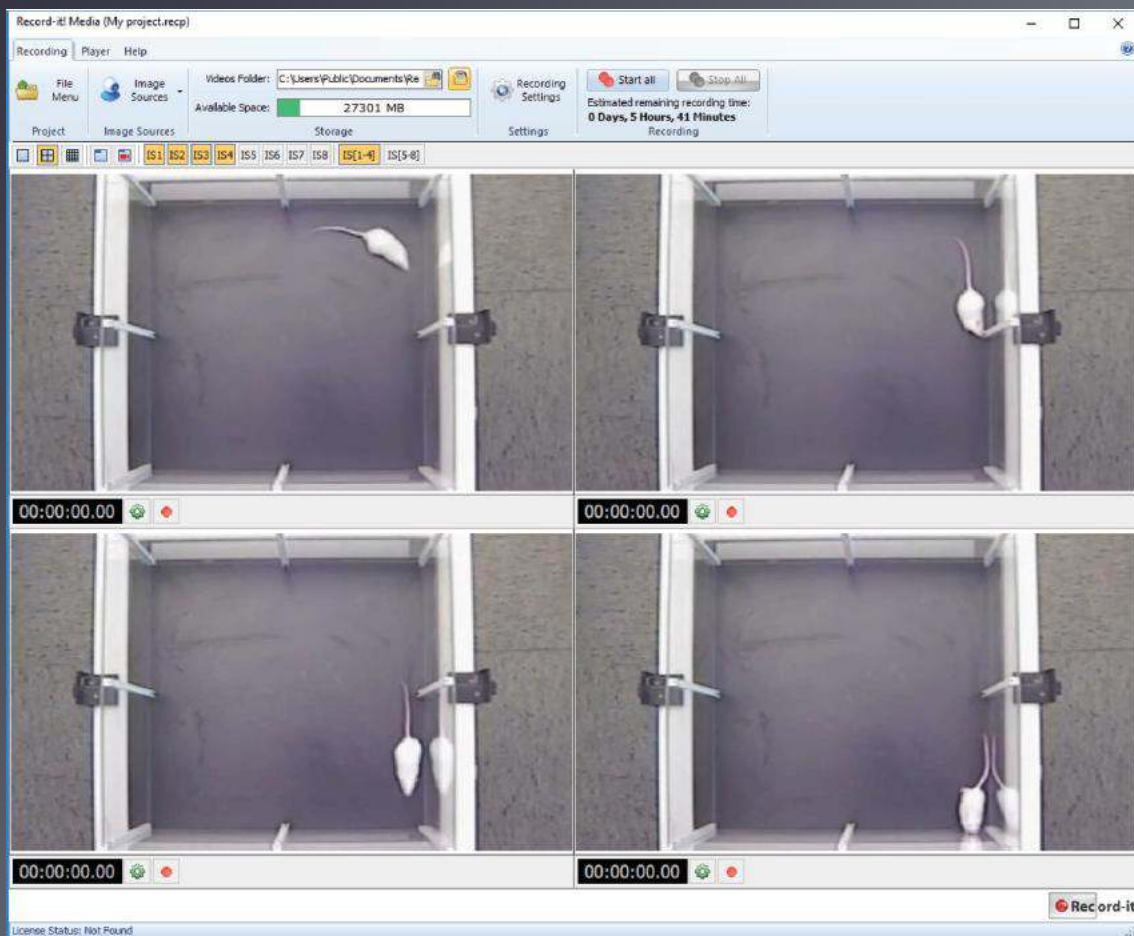


- Performant video recording solution for life science research.
- Store the video for your experiments for security and maximum traceability.
- Expandable multi-cameras video recorder for increasing the productivity of your experiment.
- Video-to-data synchronization function for accurate data validation.

Panlab

RECORD-IT! MEDIA

Record the video of your experiments from multiple cameras – simultaneously



RECORD-IT MEDIA—Multi-camera video recorder and media player

As a behavior scientist, you are making breakthrough discoveries—every day. Whether you are using home cages, specific mazes or arenas, or even operant boxes, you need to know what your subjects are doing at any moment throughout your experiments. And you need exceptional video equipment to record your scientific work.

Are you confident that your video equipment is keeping up with the productivity of your research?

RECORD-IT! MEDIA

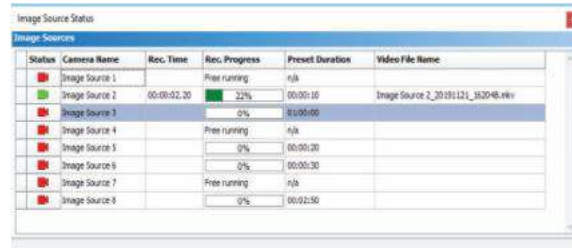
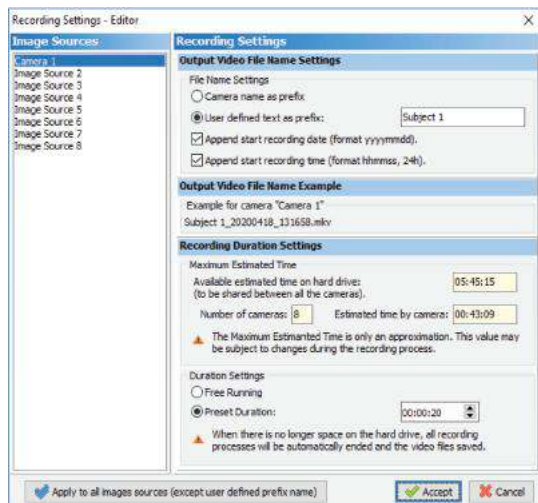
Panlab's RECORD-IT! MEDIA is an easy-to-use, state-of-the-art video recorder and player that works with multiple cameras to record the video of your scientific experiments.

A highly powerful system, it is also flexible, easily allowing the expansion of the multiple-camera capacities as your research needs change.

Around the world, across a myriad of neuroscience applications, researchers like you rely on Panlab solutions to advance their research. And as part of our commitment to continuously deliver cutting-edge solutions, RECORD-IT! MEDIA is no exception.

Features & Benefits

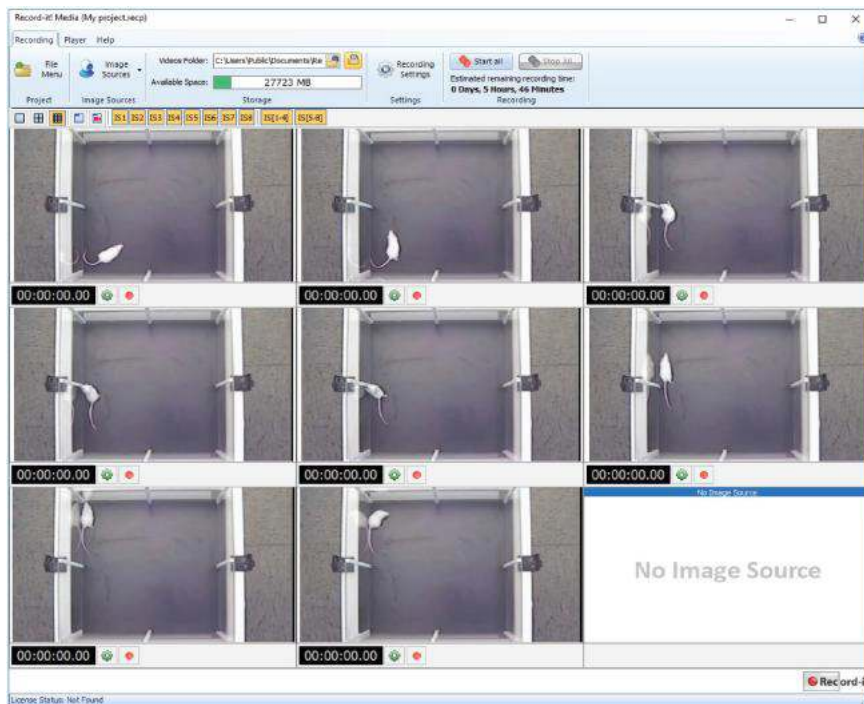
- **SECURE**—Protect your valuable work with exceptional security including traceability and video storage
- **TIME-SAVING**—Simultaneous recordings of several subjects increase the productivity of your experiments
- **FLEXIBLE**—Start with the number of cameras you have today with the confidence that you can easily add more as your needs change
- **ACCURATE**—Video-to-data synchronization function available for data validation



Powerful Video Recorder

Get performant video recordings—from multiple cameras

Flexible, RECORD-IT! MEDIA processes images (frames) from the connected image sources and is compatible with a wide range of camera technologies used in research, including digital USB, webcam, WIA and analog. The system also works with IP/network cameras to allow shared access to the images.



Capture images from up to 16 cameras—simultaneously!

Key Features

- Multi-camera video recorder and player
- Works with webcam, analog, USB digital and IP cameras
- Up to 16 cameras (individual settings including format, name, recording mode/duration)
- Independent or simultaneous Start/Stop
- 64-bit compatible platform
- High quality compression (H.264/ MPEG 4 AVC codec Xvid equivalent; mkv file extension)
- Synchronizes with third-party applications

Flexible Video Player

Compatible with a wide range of video formats



Key Features

- Easily retrieve lost files with search and re-link video file option
- Integrated Speed Selector to change visualization speed (x0.25 to x16)
- Player panel includes re-size option
- Robust controls—Play/Stay/Pause, Frame-by-Frame Rewind/Forward & Fast-Rewind/Fast-Forward (10 frames steps)

Playback accurate recordings—easily!

Integrate RECORD-IT! MEDIA into your own applications

- Video feed for a better validation/checking of the experiment.
- Easily analyze recorded video files off-line using systems, such as SMART video-tracking system for the automated evaluation of behavior
- Use in combination with other behavioral systems systems, such as our StartFear and Operant Boxes, for concomitant video recordings of experimental sessions and video-to-data synchronization
- Remote recording Start/Stop

Camera Configurations

Compatible with a wide range of the standard camera technologies used in research, view the table below to learn more about the components needed to run RECORD-IT MEDIA with 1, 4, 8 and up to 16 cameras.

CAMERA CONFIGURATIONS					
Camera Technology	Compatible Camera Models	1 Camera*	Up to 4 Cameras*	Up to 8 Cameras*	Up to 15-16 Cameras*
Analog Cameras	Any analog model	<ul style="list-style-type: none"> • 1 x Camera • 1 x CONVAN-AUSB • 1 x RECME-DIA1V1.0 	N/A	N/A	N/A
WebCams	WIA Cameras	<ul style="list-style-type: none"> • 1 x Webcam • 1 x RECME-DIA1V1.0 	<ul style="list-style-type: none"> • 4 x Webcams • 1 x HUB3USB4 • 1 x RECME-DIA8V1.0 	See USB digital configurations	See USB digital configurations
USB Digital Cameras	<ul style="list-style-type: none"> • Basler Cameras- GigE USB 3.0 Vision (color, monochrom) • IDS Cameras - USB 2.0 (color, monochrom, NIR) 	<ul style="list-style-type: none"> • 1 x USB Digital Camera • 1 x CAMDCCABLE (3, 5 or 8m) • 1 x RECME-DIA1V1.0 	<ul style="list-style-type: none"> • 4 x USB Digital Camera • 4 x CAMDCCABLE (3, 5 or 8m) • 1 x HUB3USB4 USB HUB • 1 x RECME-DIA8V1.0 	<ul style="list-style-type: none"> • 8 x USB Digital Camera • 8 x CAMDCCABLE (3, 5 or 8m) • 2 x HUB3USB4 USB HUB • 1 x PCI4USB3 PCI Expansio Card • 1 x RECME-DIA8V1.0 	<ul style="list-style-type: none"> • 16 x USB Digital Camera • 16 x CAMDCCABLE (3, 5 or 8m) • 4 x HUB3USB4 USB HUB • 1 x PCI4USB3 PCI Expansio Card • 1 x RECME-DIA16V1.0
IP Cameras	• IP Basic: RTSP NetCam	<ul style="list-style-type: none"> • 1 x RTSP NetCam • 1 x RECME-DIA1V1.0 	<ul style="list-style-type: none"> • 4 x RTSP NetCam • 1 x IPSWITCH7 Ethernet Switch • 1 x RECME-DIA8V1.0 	<ul style="list-style-type: none"> • 8 xRTSP NetCam • 1 x IPSWITCH15 Ethernet Switch • 1 x RECME-DIA8V1.0 	<ul style="list-style-type: none"> • 15 x RTSP NetCam • 1 x IPSWITCH15 Ethernet Switch • 1 x RECEDIA16V1.0
IP Cameras	• ONVIF NetCam (AXIS Cameras - ONVIF, PoE - color, NIR)	<ul style="list-style-type: none"> • 1x ONVIF NetCam • 1x RECME-DIA1V1.0 	<ul style="list-style-type: none"> • 4 x ONVIF NetCam • 4 x CAMIPCABLE (3, 5 or 10m) • 1 x IPSWITCH-POE4 Gigabit Ethernet PoE Switch • 1 x RECME-DIA8V1.0 	<ul style="list-style-type: none"> • 8 x ONVIF NetCam • 8 x CAMIPCABLE (3, 5 or 10m) • 2 x IPSWITCHPOE4 Gigabit Ethernet PoE Switch • 1 x RECME-DIA8V1.0 	<ul style="list-style-type: none"> • 16 x ONVIF NetCam • 16 x CAMIPCABLE (3, 5 or 10m) • 4 x IPSWITCHPOE4 Gigabit Ethernet PoE Switch • 1 x RECEDIA16V1.0
IP Cameras	• GigE NetCam (Basler Cameras - GigE Vision, PoE)	<ul style="list-style-type: none"> • 1 x GigE NetCam • 1 x RECME-DIA1V1.0 	<ul style="list-style-type: none"> • 4 x GigE NetCam + 4 cables • 1 x PCI4GIGEPOE PCI Expansion GigE PoE Card • 1 x RECME-DIA8V1.0 	<ul style="list-style-type: none"> • 8 x GigE NetCam + 8 cables • 1 x PCI4GIGEPOE PCI Expansion GigE PoE Card • 2 x IPSWITCH-POE8 Ethernet PoE Switch • 1 x RECME-DIA8V1.0 	<ul style="list-style-type: none"> • 8 x GigE NetCam + 8 cables • 1 x PCI4GIGEPOE PCI Expansion GigE PoE Card • 4 x IPSWITCHPOE8 Ethernet PoE Switch • 1 x RECME-DIA16V1.0
Computer Requirements		BASIC**	MEDIUM/HIGH**	MEDIUM/HIGH**	MEDIUM/HIGH**

*The frame rate (fps) that can be used would depend on the camera settings (image resolution), model, accessories and computer specifications. Contact us for more details. **Contact us for more details

ORDERING INFORMATION

Product	Model	Description
RECORD-IT! MEDIA SOFTWARE		
RECMEDIA1V1.0	76-1261	RECORD-IT! MEDIA for 1 Camera
RECMEDIA8V1.0	76-1262	RECORD-IT! MEDIA for 8 Cameras
RECMEDIA16V1.0	76-1263	RECORD-IT! MEDIA for 16 Cameras
RECMEDIAUPG1T8	76-1264	RECORD-IT! MEDIA Upgrade 1 to 8 Cameras
RECMEDIAUPG1T16	76-1265	RECORD-IT! MEDIA Upgrade 1 to 16 Cameras
RECMEDIAUPG8T16	76-1266	RECORD-IT! MEDIA Upgrade 8 to 16 Cameras
WEBCAM		
CAMWEB2	76-0261	High Resolution WebCam
IDS USB DIGITAL CAMERAS & ACCESSORIES		
CAMDCCOLOR	76-0761	USB Digital Camera - Color
CAMDCBW	76-0766	USB Digital Camera - Monochrom
CAMDCNIR	76-0768	USB Digital Camera - NIR
CAMDCCABLE3	76-0762	USB Cable 3 m for IDS Digital Camera
CAMDCCABLE5	76-0763	USB Cable 5 m for IDS Digital Camera
CAMDCCABLE8	76-0764	USB Cable 8 m for IDS Digital Camera
HUB4USB3	76-1298	HUB for 4 USB 3.0
PCI4USB3	76-1303	PCI USB Expansion Card (4 ports)
BASLER USB DIGITAL CAMERAS & ACCESSORIES		
CAMDCBSCOLOR	76-1304	Basler Cameras-GigE USB 3.0 Vision (color)
CAMDCBSBW	76-1305	Basler Cameras-GigE USB 3.0 Vision (monochrom)
HUB4USB3	76-1298	HUB for 4 USB 3.0
PCI4USB3	76-1307	PCI USB Expansion Card (4 ports)
CAMDCBSCABLE3	76-1308	USB Cable 3 m for Basler Digital Camera
CAMDCBSCABLE5	76-1309	USB Cable 5 m for Basler Digital Camera
CAMDCBSCABLE8	76-1310	USB Cable 8 m for Basler Digital Camera
IP CAMERA BASIC & ACCESSORIES		
-	-	Camera not supplied (contact us for recommendation)
IPSWITCH7	76-1311	Ethernet Switch for up to 7 IP BASIC Cameras
IPSWITCH15	76-1312	Ethernet Switch for up to 15 IP BASIC Cameras

ORDERING INFORMATION		
Product	Model	Description
ONVIF NETCAM (AXIS CAMERAS - ONVIF, POE) & ACCESSORIES		
-	-	Camera not supplied (contact us for recommendation)
IPSWITCHPOE4	76-1313	Gigabit Ethernet Switch PoE for up to 4 cameras
CAMIPCABLE3	76-1314	Cable Ethernet Cat6 (Shield) - 3m
CAMIPCABLE5	76-1315	Cable Ethernet Cat6 (Shield) - 5m
CAMIPCABLE10	76-1316	Cable Ethernet Cat6 (Shield) - 10m
GIGE NETCAM (BASLER CAMERAS - POE) & ACCESSORIES		
CAMIPBSCOLOR	76-1317	Basler Cameras-GigE PoE Vision (color)
CAMIPBSNIR	76-1318	Basler Cameras-GigE PoE Vision (NIR)
IPINJECTPOE	76-1319	Single Ethernet Port Injector
CAMIPCABLE3	76-1314	Cable Ethernet Cat6 (Shield) - 3m
CAMIPCABLE5	76-1315	Cable Ethernet Cat6 (Shield) - 5m
CAMIPCABLE10	76-1316	Cable Ethernet Cat6 (Shield) - 10m
PCI4GIGEPOE	76-1320	PCI Ethernet Expansion PoE Card (4 ports)
IPSWITCHPOE8	76-1321	Ethernet Switch PoE for up to 4 Cameras
OTHER ACCESSORIES		
CAMROOF	76-0262	Camera Fixation System - C mount (roof support)
CAMTRIPOD	76-0274	Camera Fixation System - C mount (standard tripod)

Panlab



www.panlab.com • www.harvardapparatus.com
 info@panlab.com • support@hbiosci.com

Panlab International Sales (+34) 934.750.697 • Panlab Spain Sales (+34) 934 190 709
 Harvard Apparatus 508-893-8999 • Harvard Apparatus (toll free) US Only 800-272-2775 (USA Only)